

Indicators of Alcohol and Other Drug Risk and Consequences for California Counties

State of California

2007



Key Indicators of Community Alcohol and Drug Use

Table of Contents

Introduction.....	1
Dashboard	3
Prevalence of Alcohol Use	4

Indicator 1 & 2: Prevalence of Past Month Alcohol Use

Table/Figure 1.1	Estimated Number and Percent of Persons 18 Years and Over Who Reported Any Use of Alcohol or Binge Drinking in the Past Thirty Days with Comparison to State Rates.....	5
Table/Figure 1.2	Estimated Number of Persons Reporting Any Alcohol Use of Any Binge Drinking by Gender.....	5
Table 1.3	Estimated Number of Persons Reporting Any Alcohol Use or Any Binge Drinking by Race/Ethnicity	6
Figure 1.3	Past Month Alcohol Use by Race/Ethnicity	6
Figure 1.4	Past Month Binge Drinking by Race/Ethnicity	6
Table 1.4	Estimated Number of Persons Reporting Any Alcohol Use or Any Binge Drinking by Age.....	7
Figure 1.5	Past Month Alcohol Use by Age Category	7
Figure 1.6	Past Month Binge Drinking by Age Category	7
Table 1.5	Estimated Number of Adolescents Under Age 18 Reporting Past Month Binge Drinking	8

Admissions to Alcohol and Drug Treatment.....	9
---	---

Indicator 3: Admissions to Alcohol and Drug Treatment

Table/Figure 3.1	Number of Admissions to Alcohol and Drug Treatment and Rate per 100,000 with Comparison to Statewide Rates.....	10
Table 3.2	AOD Treatment Admissions to Primary Drug Type, Percent of Total, and Rate per 100,000 Population 10-69 Years.....	10
Figure 3.2	2000 Admissions and Rates by Primary Drug Type.....	10
Figure 3.3	2004 Admissions and Rates by Primary Drug Type.....	10
Table 3.3	Treatment Admissions by Client Age and Age-Specific Rate per 100,000 Population.....	11
Table 3.4	Admissions to Alcohol and Drug Treatment by Client Race/Ethnicity and Rate per 100,000.....	12
Figure 3.4	State of California Treatment Admissions Rate per 100,000 Population 10-69 by Primary Drug Type	13
Figure 3.5	State of California Treatment Admission Rate per 100,000 Population by Client Age	13
Figure 3.6	State of California Treatment Admission Rate per 100,000 by Client Race/Ethnicity	13
Table 3.5	Characteristics of Clients Admitted to Alcohol and Drug Treatment.....	14
Table 3.6	AOD Treatment Admissions Among Youth Under Age 18 by Primary Drug Type and Percent of Total Admissions.....	15
Figure 3.7	2004 Admissions by Primary Drug Type Among Youth Under 18 Years	15

Table	3.7	AOD Treatment Admissions Among Youth Under Age 18 by Client Race/Ethnicity, Rate per 100,000 Population 10 to 17, and Percent of Total Youth Admissions	16
-------	-----	---	----

		Alcohol and Drug Related Crime.....	17
--	--	-------------------------------------	----

Indicator 4: Arrests for Drug-Related Crime

Table/Figure	4.1	Number of Felony and Misdemeanor Arrests for Drug Offenses and Rate per 100,000 Population 10-69 Years.....	18
Table	4.2	Number of Felony and Misdemeanor Arrests for Drug Offenses by Specific Offense and Rate per 100,000 Population 10-69 Years	18
Table	4.3	Number of Arrests for Felony and Misdemeanor Drug Offenses by Race/Ethnicity of Offender and Rate per 100,000 Population.....	19
Table	4.4	Number of Arrests for Felony and Misdemeanor Drug Offenses by Age of Offender and Age-Specific Rate per 100,000 Population	20
Figure	4.2	State of California Drug Arrest Rate per 100,000 Population 10-69 for Drug Offenses	21
Figure	4.3	State of California Age-Specific Drug Arrest Rate per 100,000 Population 10-69 by Age Group	21
Figure	4.4	State of California Drug Arrest Rate per 100,000 Population 10-69 by Client Race/Ethnicity	21
Table	4.5	Number of Arrests for Felony and Misdemeanor Drug Offenses by Gender and Race Among Underage Offenders and Rate per 100,000 Population 10-17 Years.....	22

Indicator 5: Arrests for Alcohol-Related Crime

Table/Figure	5.1	Number of Felony and Misdemeanor Arrests for Alcohol Offenses and Rate per 100,000 Population 10-69 Years.....	23
Table	5.2	Number of Felony and Misdemeanor Arrests for Alcohol Offenses by Specific Offense and Rate per 100,000 Population 10-69 Years	23
Table	5.3	Number of Arrests for Felony and Misdemeanor Alcohol Offenses by Race/Ethnicity of Offender and Rate per 100,000 Population.....	24
Table	5.4	Number of Arrests for Felony and Misdemeanor Alcohol Offenses by Age of Offender and Age-Specific Rate per 100,000 Population	25
Figure	5.2	State of California Alcohol Arrest Rate per 100,000 Population 10-69 for Alcohol Offenses.....	26
Figure	5.3	State of California Age-Specific Alcohol Arrest Rate per 100,000 Population 10-69 by Age Group	26
Figure	5.4	State of California Alcohol Arrest Rate per 100,000 Population 10-69 by Client Race/Ethnicity	26
Table	5.5	Number of Arrests for Felony and Misdemeanor Alcohol Offenses by Gender and Race Among Underage Offenders and Rate per 100,000 Population 10-17 Years	27

		Drinking and Driving.....	28
--	--	---------------------------	----

Indicator 6: Alcohol-Involved Motor Vehicle Accidents

Table/Figure	6.1	State of California Fatalities in Alcohol-Involved Accidents and Rate per 100,000 with Comparison to Statewide Rates.....	29
--------------	-----	---	----

Table	6.2	State of California Fatalities in Alcohol-Involved Accidents as a Percent of Total Collisions with a Comparison of Underage Drivers	29
Table	6.3	Parties in Alcohol-Involved Accidents Who Had Been Drinking by Party Gender and Race and Rate per 100,000 Population Ages 16 and Over	30
Table	6.4	Parties in Alcohol-Involved Accidents Who Had Been Drinking by Age and Rate per 100,000 Population	31
Figure	6.2	State of California 'Had Been Drinking' Drivers per 100,000 Population of Driving Age (16 and Over) by Age	32
Table	6.5	Underage Parties (<21 Years) in Alcohol-Involved Accidents Who Had been Drinking by Party Gender and Race and Rate per 100,000 Population Ages 16 – 20	32
Table	6.6	Youth who Have Ridden in a Car with Someone Who Had Been Drinking Percent of Youth Population by Gender with Comparison to State Rates	33
Figure	6.3	Percent of Youth Who Have Ridden in a Car with Someone who Had Been Drinking	33

Alcohol and Drug-Related Morbidity..... 34

Indicator 7: Hospitalization Due to Alcohol and Drug Use

Table/Figure	7.1	Number of Hospital Admissions Due to Alcohol and Drug-Related Causes (Combined) and Rate per 100,000 with Comparison to Statewide Rates	35
Table/Figure	7.2	Number of Hospital Admissions Due to <i>Alcohol</i> -Related Causes and Rate per 100,000 with Comparison to Statewide Rates	35
Table/Figure	7.3	Number of Hospital Admissions Due to <i>Drug</i> -Related Causes and Rate per 100,000 with Comparison to Statewide Rates	35
Table	7.4	Number of Hospital Admissions Due to Alcohol and Drug-Related Causes by Specific Cause	36

Alcohol and Drug-Related Mortality..... 37

Indicator 8: Deaths Due to Alcohol and Drug Use

Table/Figure	8.1	Number of Deaths due to Alcohol and Drug-Related Causes and Age-Adjusted Rate per 100,000 with comparison to Statewide Rates	38
Table	8.2	Number of Deaths Due to Cirrhosis of the Liver and Rate per 100,000 and Comparison to Healthy People 2010 Objective	38
Table	8.3	Number of Drug-Induced Deaths and Rate per 100,000 and Comparison to healthy People 2010 Objective	38
Table	8.4	Number of Deaths due to Alcohol and Drug-Related Causes by Specific Cause	39
Table	8.5	Number of Deaths Due to Alcohol and Drug-Related Causes by Population Demographics of Decedents with Percent of Total Deaths	40

Sources..... 41

Introduction

In the mid-1990s, the California Department of Alcohol and Drug Programs, in collaboration with the Center for Applied Research Solutions (CARS), Inc. began to work toward improving the state's prevention information system. A key component of this information system was the continuous collection, monitoring and reporting of selected community-level indicators that would serve as direct and indirect measures of alcohol and other drug use prevalence and related problems. This information system was designed to assist with state and local prevention planning and policy-making by providing useful, systematic data about prevention and treatment needs and outcomes throughout the state.

The present report is the most recent product of this ongoing effort. It differs from earlier versions in a few important ways. First, while previous reports typically summarized data for more than twenty-five indicators of health and social conditions that are theoretically linked to problem substance use, the current version is more streamlined, focusing on eight key indicators of AOD use and abuse prevalence and their direct consequences, including impacts on the criminal justice, health and alcohol and drug treatment systems. Second, the 2007 report updates information contained in earlier versions, but expands in its depth to summarize data for populations within the larger county, including age, gender, and race/ethnicity sub-groups. This expanded detail allows for more precise analyses of alcohol and drug use problems within a county population and enhances the ability to effectively target prevention and intervention strategies to community needs. Similar to previous reports, the 2007 version includes simple analytic tools to help users interpret the information presented. This includes use of population-based rates (e.g., the number of incidents relative to the total population) to make meaningful comparisons between geographic areas that differ in population size, or comparisons between differing time points. Data is presented at both the county and state level to allow county rates to be evaluated against a relative average

The overall intent of the report is to provide a simple, easy-to-use resource that helps synthesize and interpret the most relevant indicator data currently available to assess substance use problems, in an effort to optimize prevention planning and outcome measurement efforts in communities through the state. Specifically, it is designed to support the work of planners, policy-makers, and practitioners in the field in:

- Determining the incidence of alcohol and other drug use problems within county populations and sub-populations;
- Monitoring trends in problem incidence to identify emergent issues and detect changes in status over time;
- Establishing program resource levels that are appropriate to address the nature and extent of prevention and treatment needs; and,
- Documenting progress toward achieving targeted prevention objectives and outcomes.

The report contains information on several key indicators of alcohol and drug prevalence and consequences for California populations in each of the following six areas:

- Household prevalence of problem alcohol use and use of illicit drugs;
- Admissions to publicly-funded alcohol and drug treatment facilities;
- Arrests for alcohol and drug-related criminal offenses;
- Motor vehicle accidents involving drivers who had been drinking;
- Hospitalizations for alcohol and drug-related conditions; and,
- Mortality attributable to acute and chronic alcohol and drug use.

Each report contains data compiled from several sources, including a statewide, longitudinal survey of California household populations, and state data systems housing public archival records from four central agencies, including the California Department of Justice, the California Highway Patrol, the California Department of Health Services, and the Office of Statewide Health Planning and Development (OSHPD). This reliance on statewide data sources ensures that the information reported is drawn from reliable and valid measures that are routinely and uniformly collected across jurisdictions (i.e., all counties use the same data collection), allowing for comparisons over time, across counties, and between counties and the state.

Key Indicators of Community Alcohol and Drug Use • State of California

	2000	2001	2002	2003	2004	Three Year Average
INDICATOR 1						
Past Month Alcohol Use	•	14,230,000	•	14,620,000	•	14,620,000 ¹
Percentage of Total Respondents	•	24,594,000	•	25,469,000	•	25,469,000 ¹
	•	57.9%	•	57.4%	•	57.4% ¹
INDICATOR 2						
Past Month Binge Drinking	•	3,772,000	•	3,856,000	•	3,856,000 ¹
Percentage of Total Respondents	•	24,517,000	•	25,469,000	•	25,469,000 ¹
	•	15.4%	•	15.1%	•	15.1% ¹
INDICATOR 3						
Admissions to Alcohol and Other Drug Treatment	220,998	245,823	248,896	240,793	227,586	239,092
Rate per 1000 Population 10-69	26,237,550	26,849,142	27,398,530	27,929,698	28,387,096	27,905,108
	842.3	915.6	908.4	862.1	801.7	856.8
INDICATOR 4						
Arrests for Drug-Related Offenses	252,353	249,791	257,458	275,299	290,503	274,420
Rate per 100,000 Population 10-69	26,237,550	26,849,142	27,398,530	27,929,698	28,387,096	27,905,108
	961.8	930.4	939.7	985.7	1023.4	983.4
INDICATOR 5						
Arrests for Alcohol-Related Offenses	324,876	313,209	308,160	314,982	308,682	310,608
Rate per 100,000 Population 10-69	26,237,550	26,849,142	27,398,530	27,929,698	28,387,096	27,905,108
	1238.2	1166.6	1124.7	1127.8	1087.4	1113.1
INDICATOR 6						
Alcohol-Involved Motor Vehicle Accident Fatalities	1,233	1,308	1,411	1,445	**	1,388
Rate per 100,000 Population	34,098,744	34,784,376	35,392,957	35,989,988	**	35,389,107
	3.6	3.8	4.0	4.0	**	3.9
INDICATOR 7						
Alcohol and Drug Use Hospitalizations	32,316	31,338	**	32,282	**	31,979
Rate per 100,000 Population	34,098,744	34,784,376	35,392,957	35,989,988	**	34,957,703
	94.8	90.1	**	89.7	**	91.5
INDICATOR 8						
Deaths Due to Alcohol and Drug Use	6,146	6,388	6,857	7,318	**	6,854
Rate per 100,000 Population	34,098,744	34,784,376	35,392,957	35,989,988	**	35,389,107
	19.0	19.2	20.1	20.9	**	20.1

** Data not available for most current reporting year. ¹ 2003 prevalence rate; no three- year average calculated.

Prevalence of Alcohol Use

Key Findings

- The prevalence of past month alcohol use in California in 2003 was roughly 57 percent of the population 18 and over. The rate for binge drinking was about 15 percent during this year.
- There is a marked difference in alcohol use between male and females in California. Roughly two-thirds of males reported alcohol use in the past 30 days in 2003 compared to about half of females. Almost one fourth of males reported binge drinking in 2003 compared to about seven percent of females.
- There were relatively large differences between race/ethnic groups in term of alcohol use in 2003. Almost two-thirds of Whites reported past month use compared to about half of Blacks. Other race/ethnic categories were slightly under 50 percent. American Indians had the largest decrease in alcohol use rates between 2001 and 2003 with a reduction of 57 percent to 45 percent.
- Binge drinking rates were highest in 2003 among 18 to 24 year-olds and 25 to 34 year-olds with rates of 24 percent and 23 percent respectively. Rates steadily declined with age.
- Roughly 6.3 percent of adolescents under 18 reported past month binge drinking in 2003, a slight decrease from the 2001 level of 6.6 percent. In 2003 the rate for males was 7.3 percent compared to the rate for females of 5.2 percent.



Indicators 1 & 2: Prevalence of Past Month Alcohol Use

The number and percent of persons in the population who reported any use of alcohol and number of persons who reported any binge drinking in the past thirty days.

Table/Figure 1.1

Estimated Number and Percent of Persons 18 Years and Over Who Reported Any Use of Alcohol or Any Binge Drinking in the Past Thirty Days

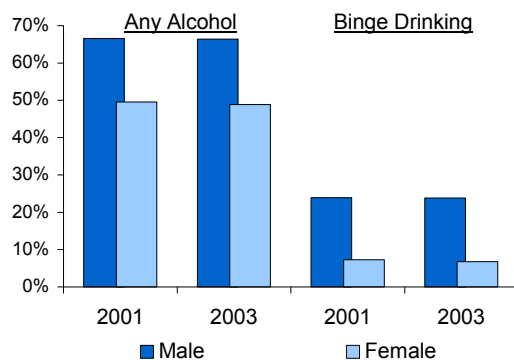
	Any Alcohol Use		Binge Drinking	
	2001	2003	2001	2003
Estimated Number *	14,230,000	14,620,000	3,772,000	3,856,000
Estimated Population 18 and over	24,594,000	25,469,000	24,517,000	25,469,000
Percent of Total Population	57.9%	57.4%	15.4%	15.1%

* Estimates rounded to the nearest thousand.

Table/Figure 1.2

Estimated Number of Persons Reporting Any Alcohol Use or Any Binge Drinking by Gender

		Any Alcohol Use		Binge Drinking	
		2001	2003	2001	2003
Male	Estimated Number	8,010,000	8,285,000	2,861,000	2,967,000
	Estimated Population	12,023,000	12,475,000	11,963,000	12,475,000
	Percent of Population	66.6%	66.4%	23.9%	23.8%
Female	Estimated Number	6,219,000	6,335,000	912,000	888,000
	Estimated Population	12,571,000	12,994,000	12,554,000	12,994,000
	Percent of Population	49.5%	48.8%	7.3%	6.8%



Healthy People 2010
U.S. Department of Health and
Human Services

Objectives 26-10a

Increase the proportion of adolescents not using any alcohol or illicit drugs in the past thirty days.

•••

Objectives 26-11c

Decrease the proportion of adults engaging in binge drinking of alcoholic beverages during the past month.

Indicators 1 & 2: Prevalence of Past Month Alcohol Use (Continued)

Table 1.3
Estimated Number of Persons Reporting Any Alcohol Use or Any Binge Drinking by Race/Ethnicity

		Any Alcohol Use		Binge Drinking	
		2001	2003	2001	2003
American Indian	Estimated Number	136,000	136,000	49,000	53,000
	Estimated Population	240,000	299,000	237,000	299,000
	Percent of Population	56.6%	45.4%	20.7%	17.7%
Asian/Pacific Islander	Estimated Number	1,267,000	1,385,000	248,000	313,000
	Estimated Population	2,955,000	3,004,000	2,948,000	3,004,000
	Percent of Population	42.9%	46.1%	8.4%	10.4%
Black	Estimated Number	773,000	798,000	178,000	149,000
	Estimated Population	1,503,000	1,597,000	1,499,000	1,597,000
	Percent of Population	51.4%	50.0%	11.9%	9.3%
Hispanic	Estimated Number	2,977,000	3,164,000	1,080,000	1,162,000
	Estimated Population	6,101,000	6,645,000	6,081,000	6,645,000
	Percent of Population	48.8%	47.6%	17.8%	17.5%
White	Estimated Number	8,663,000	8,678,000	2,105,000	2,050,000
	Estimated Population	13,068,000	13,114,000	13,028,000	13,114,000
	Percent of Population	66.3%	66.2%	16.2%	15.6%
Other	Estimated Number	414,000	460,000	112,000	130,000
	Estimated Population	726,000	811,000	724,000	811,000
	Percent of Population	57.1%	56.7%	15.5%	16.0%

- Estimate not reported due to small sample size.

Figure 1.3
Past Month Alcohol Use by Race/Ethnicity

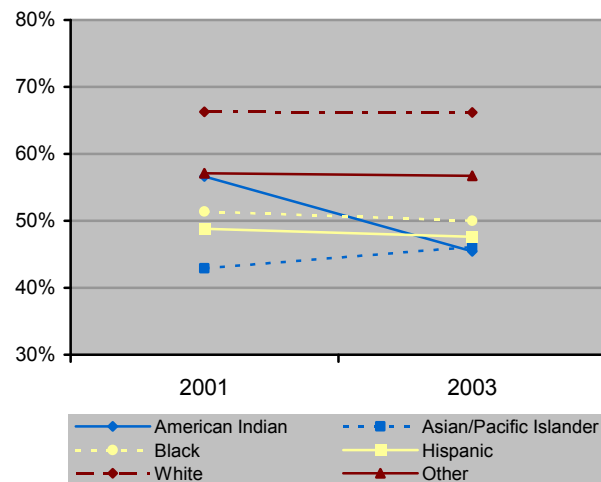
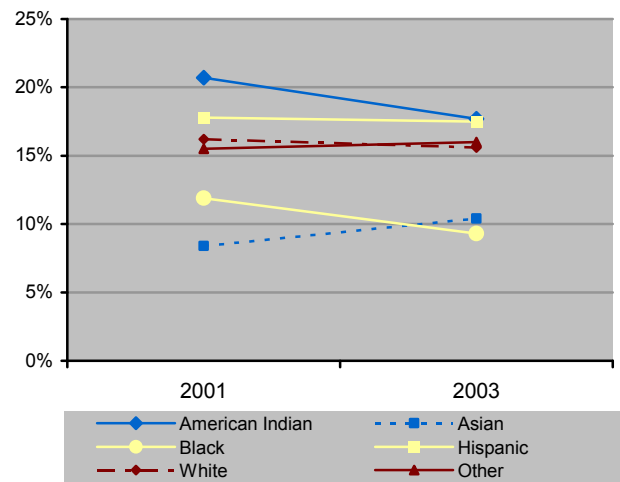


Figure 1.4
Past Month Binge Drinking by Race/Ethnicity



Indicators 1 & 2: Prevalence of Past Month Alcohol Use (Continued)

Table 1.4
Estimated Number of Persons Reporting Any Alcohol Use or Any Binge Drinking by Age

		Any Alcohol Use		Binge Drinking	
		2001	2003	2001	2003
18 to 24	Estimated Number	1,886,000	1,868,000	851,000	842,000
	Estimated Population	3,356,000	3,481,000	3,344,000	3,481,000
	Percent of Population	56.2%	53.7%	25.4%	24.2%
25 to 34	Estimated Number	3,120,000	3,069,000	1,133,000	1,127,000
	Estimated Population	5,123,000	5,015,000	5,106,000	5,015,000
	Percent of Population	60.9%	61.2%	22.2%	22.5%
35 to 44	Estimated Number	3,321,000	3,369,000	869,000	870,000
	Estimated Population	5,407,000	5,554,000	5,393,000	5,554,000
	Percent of Population	61.4%	60.7%	16.1%	15.7%
45 to 54	Estimated Number	2,688,000	2,756,000	548,000	577,000
	Estimated Population	4,440,000	4,702,000	4,428,000	4,702,000
	Percent of Population	60.5%	58.6%	12.4%	12.3%
55 to 64	Estimated Number	1,520,000	1,793,000	250,000	300,000
	Estimated Population	2,704,000	3,071,000	2,694,000	3,071,000
	Percent of Population	56.2%	58.4%	9.3%	9.8%
65 and Over	Estimated Number	1,695,000	1,764,000	122,000	140,000
	Estimated Population	3,563,000	3,647,000	3,552,000	3,647,000
	Percent of Population	47.6%	48.4%	3.4%	3.8%

Figure 1.5
Past Month Alcohol Use by Age Category

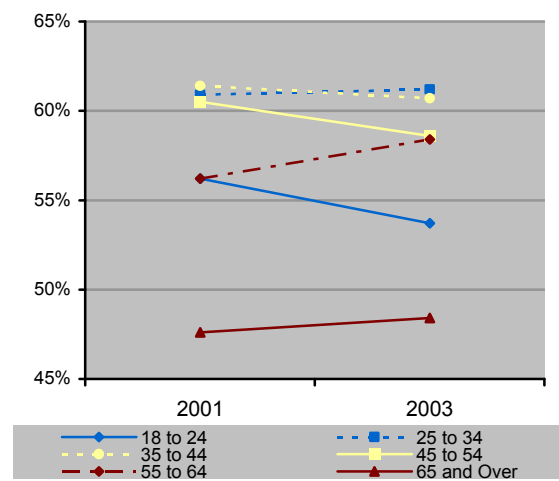
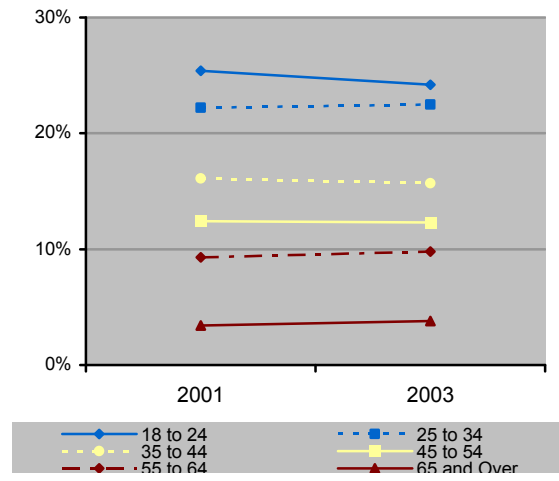


Figure 1.6
Past Month Binge Drinking by Age Category



Indicators 1 & 2: Prevalence of Past Month Alcohol Use (Continued)

Table 1.5
Estimated Number of Adolescents under Age 18 Reporting Past Month Binge Drinking

		2001	2003
CALIFORNIA	Estimated Number	200,000	205,000
	Estimated Population	3,040,000	3,260,000
	Percent of Population	6.6%	6.3%
Male	Estimated Number	106,000	121,000
	Estimated Population	1,562,000	1,669,000
	Percent of Population	6.8%	7.3%
Female	Estimated Number	94,000	83,000
	Estimated Population	1,478,000	1,590,000
	Percent of Population	6.3%	5.2%
American Indian	Estimated Number	-	-
	Estimated Population	-	-
	Percent of Population	-	-
Asian/Pacific Islander	Estimated Number	-	-
	Estimated Population	-	-
	Percent of Population	-	-
Black	Estimated Number	-	-
	Estimated Population	-	-
	Percent of Population	-	-
Hispanic	Estimated Number	58,000	68,000
	Estimated Population	983,000	1,109,000
	Percent of Population	5.9%	6.1%
White	Estimated Number	115,000	105,000
	Estimated Population	1,316,000	1,349,000
	Percent of Population	8.7%	7.8%
Other	Estimated Number	-	-
	Estimated Population	-	-
	Percent of Population	-	-

Admissions to Alcohol and Drug Treatment

Key Findings

- Overall, admissions to treatment facilities across the state of California have dropped significantly since 2001. In 2001 there were about 916 admissions per 100,000 compared to 802 admissions per 100,000 in 2004.
- Admissions due to methamphetamine use accounted for over one third of all admissions in 2004. Admissions due to alcohol use accounted for roughly 20 percent of admissions, heroin for 19 percent of admissions, marijuana for 13 percent of admissions, and crack/cocaine for 11 percent in 2004. The rate of admissions due to methamphetamine use increased significantly between 2000 and 2004 from 156 per 100,000 to 274 per 100,000.
- Over half of admissions were for individuals between 25 and 44 years in 2004. Roughly nine percent were for youth between 10 and 17 years. Whites accounted for 46 percent of admissions in 2004. Hispanics comprised about a third of admissions, and Blacks accounted for about 15 percent of admissions in 2004. The rate of admission for all race/ethnic groups declined between 2000 and 2004.
- Males accounted for almost two-thirds of all admissions in 2004. Almost 70 percent of individuals who were admitted initiated substance use before age 21.
- Roughly 24 percent of admissions were for IV drug users and about six percent were pregnant.
- In 2004, for adolescents under 18 almost 60 percent of admissions were for marijuana use, about 20 percent for alcohol use, and about 16 percent for methamphetamine use. The rate of admissions for methamphetamine use increased from 39 per 100,000 in 2000 to 72 per 100,000 in 2004.
- For adolescents under 18 in 2004, about two thirds of admissions were for males. Hispanics accounted for 55 percent of admissions, Whites about 26 percent, and Blacks about 12 percent. Rates of admission varied significantly by race/ethnic group. American Indians were admitted at a rate of 868 per 100,000, followed by Blacks at 811 per 100,000, Hispanics at 574 per 100,000 and Whites at 345 per 100,000. The rate of admissions for Asian/Pacific Islanders was only 130 per 100,000.



Indicator 3: Admissions to Alcohol and Drug Treatment

The number of admissions to publicly funded alcohol and other drug treatment facilities in California and rate of admission per 100,000 population 10 to 69 years.

Table/Figure 3.1
Number of Admissions to Alcohol and Drug Treatment and Rate per 100,000

	2000	2001	2002	2003	2004
Number of Treatment Admissions	220,998	245,823	248,896	240,793	227,586
Population 10-69	26,237,550	26,849,142	27,398,530	27,929,698	28,387,096
Rate per 100,000	842.3	915.6	908.4	862.1	801.7

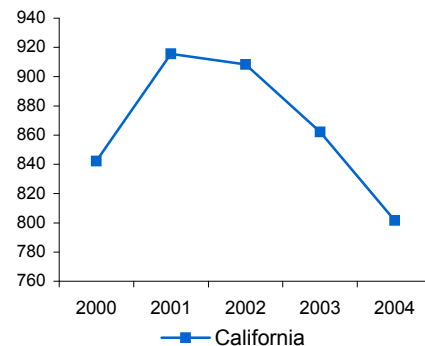


Table 3.2
AOD Treatment Admissions by Primary Drug Type, Percent of Total Admissions, and Rate per 100,000 Population 10-69 Years

	2000	2001	2002	2003	2004
TOTAL ADMISSIONS	220,998	245,823	248,896	240,793	227,586
Methamphetamines	40,851 18.5% 155.7	61,863 25.2% 230.4	71,772 28.8% 262.0	74,405 30.9% 266.4	77,781 34.2% 274.0
Alcohol	55,050 24.9% 209.8	56,322 22.9% 209.8	54,176 21.8% 197.7	50,560 21.0% 181.0	45,052 19.8% 158.7
Marijuana	22,778 10.3% 86.8	29,018 11.8% 108.1	31,466 12.6% 114.8	30,373 12.6% 108.7	29,563 13.0% 104.1
Heroin	70,472 31.9% 268.6	62,078 25.3% 231.2	54,830 22.0% 200.1	48,458 20.1% 173.5	42,241 18.6% 148.8
Crack/Cocaine	25,072 11.3% 95.6	28,174 11.5% 104.9	27,972 11.2% 102.1	27,361 11.4% 98.0	24,435 10.7% 86.1
Other Drugs	6,775 3.1% 25.8	8,368 3.4% 31.2	8,680 3.5% 31.7	9,636 4.0% 34.5	8,514 3.7% 30.0

Figure 3.2
2000 Admissions by Primary Drug Type

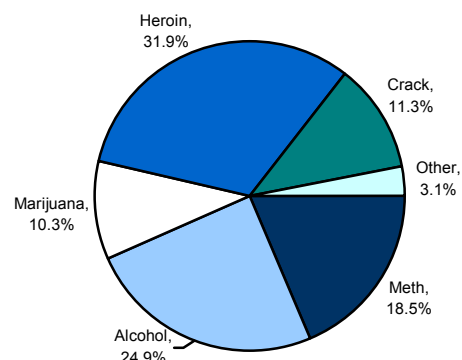
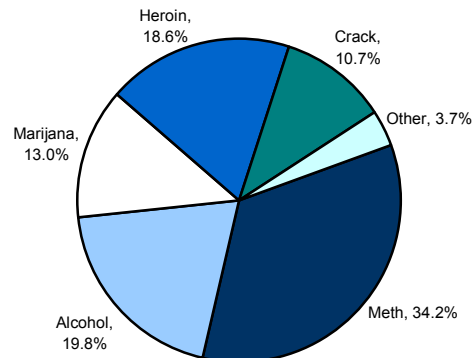


Figure 3.3
2004 Admissions by Primary Drug Type



Indicator 3: Admissions to Alcohol and Drug Treatment (Continued)

Table 3.3
Treatment Admissions by Client Age and Age-Specific Rate per 100,000 Population

		2000	2001	2002	2003	2004
TOTAL ADMISSIONS		220,998	245,823	248,896	240,793	227,586
10-17 Years	Number	17,410	20,885	21,226	21,806	20,592
	Population	4,075,181	4,195,254	4,301,243	4,389,095	4,449,006
	Rate per 100,000	427.2	497.8	493.5	496.8	462.8
	Percent of Total	7.9%	8.5%	8.5%	9.1%	9.0%
18-24 Years	Number	27,693	34,849	37,389	37,720	37,213
	Population	3,386,962	3,452,012	3,528,042	3,562,712	3,601,325
	Rate per 100,000	817.6	1009.5	1059.8	1058.7	1033.3
	Percent of Total	12.5%	14.2%	15.0%	15.7%	16.4%
25-34 Years	Number	55,674	62,073	62,346	59,654	55,757
	Population	5,247,447	5,265,975	5,291,088	5,300,067	5,285,997
	Rate per 100,000	1061.0	1178.8	1178.3	1125.5	1054.8
	Percent of Total	25.2%	25.3%	25.0%	24.8%	24.5%
35-44 Years	Number	75,112	79,323	77,653	71,429	65,346
	Population	5,511,998	5,577,123	5,600,481	5,647,294	5,686,698
	Rate per 100,000	1362.7	1422.3	1386.5	1264.8	1149.1
	Percent of Total	34.0%	32.3%	31.2%	29.7%	28.7%
45-54 Years	Number	37,370	40,519	41,231	40,907	39,244
	Population	4,385,820	4,569,996	4,690,274	4,824,610	4,948,970
	Rate per 100,000	852.1	886.6	879.1	847.9	793.0
	Percent of Total	16.9%	16.5%	16.6%	17.0%	17.2%
55-64 Years	Number	6,520	7,063	8,015	8,190	8,351
	Population	2,643,259	2,781,932	2,959,008	3,141,430	3,312,749
	Rate per 100,000	246.7	253.9	270.9	260.7	252.1
	Percent of Total	3.0%	2.9%	3.2%	3.4%	3.7%
65+ Years	Number	1,209	1,096	1,029	1,072	1,060
	Population	3,616,009	3,715,729	3,801,509	3,903,957	3,998,057
	Rate per 100,000	33.4	29.5	27.1	27.5	26.5
	Percent of Total	0.5%	0.4%	0.4%	0.4%	0.5%

Indicator 3: Admissions to Alcohol and Drug Treatment (Continued)

Table 3.4
Admissions to Alcohol and Drug Treatment by Client Race/Ethnicity and Rate per 100,000

		2000	2001	2002	2003	2004
TOTAL ADMISSIONS		220,998	245,823	248,896	240,793	227,586
American Indian	Number	3,679	4,049	4,202	3,771	3,791
	Population	150,264	157,905	165,656	173,338	181,019
	Rate per 100,000	2448.4	2564.2	2536.6	2175.5	2094.3
	Percent of Total	1.7%	1.6%	1.7%	1.6%	1.7%
Asian/Pacific Islander	Number	4,830	5,529	5,769	5,363	5,252
	Population	3,137,325	3,231,504	3,341,016	3,444,198	3,539,798
	Rate per 100,000	154.0	171.1	172.7	155.7	148.4
	Percent of Total	2.2%	2.2%	2.3%	2.2%	2.3%
Black	Number	39,310	41,507	40,970	39,173	34,988
	Population	1,737,458	1,754,279	1,763,065	1,766,870	1,764,424
	Rate per 100,000	2262.5	2366.0	2323.8	2217.1	1983.0
	Percent of Total	17.8%	16.9%	16.5%	16.3%	15.4%
Hispanic	Number	63,043	72,662	74,214	73,501	73,308
	Population	8,333,039	8,677,217	9,051,335	9,421,918	9,762,633
	Rate per 100,000	756.5	837.4	819.9	780.1	750.9
	Percent of Total	28.5%	29.6%	29.8%	30.5%	32.2%
White	Number	104,625	116,297	117,244	108,807	104,459
	Population	12,439,889	12,579,997	12,619,536	12,656,957	12,669,652
	Rate per 100,000	841.0	924.5	929.1	859.7	824.5
	Percent of Total	47.3%	47.3%	47.1%	45.2%	45.9%
Other	Number	5,511	5,779	6,497	10,178	5,788
	Percent of Total	2.5%	2.4%	2.6%	4.2%	2.5%

Indicator 3: Admissions to Alcohol and Drug Treatment (Continued)

Figure 3.4
State of California
Treatment
Admission Rate
per 100,000
Population 10-69
by Primary Drug
Type

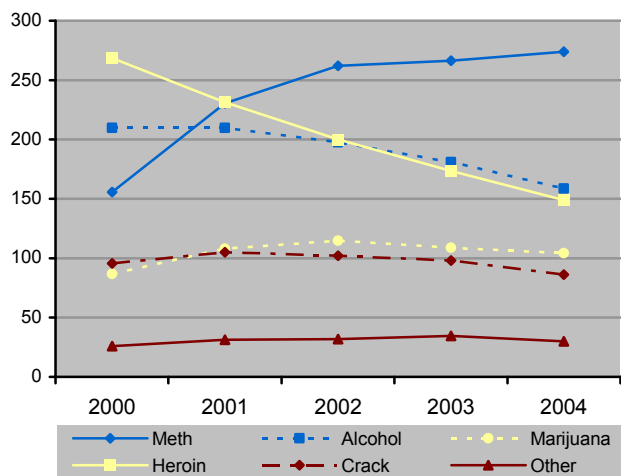


Figure 3.5
State of California
Treatment
Admission Rate
per 100,000
Population 10-69
by Client Age

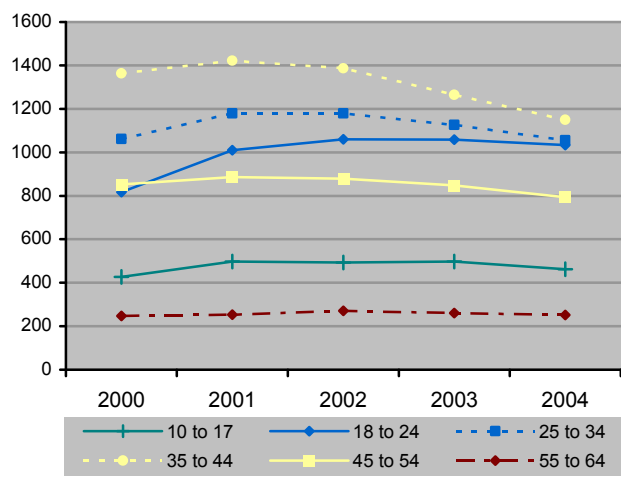
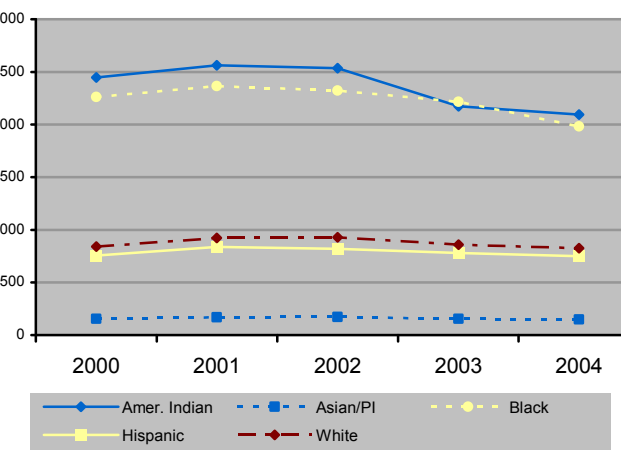


Figure 3.6
State of California
Treatment
Admission Rate
per 100,000
Population 10-69
by Client Race/
Ethnicity



Indicator 3: Admissions to Alcohol and Drug Treatment (Continued)

Table 3.5
Characteristics of Clients Admitted to Alcohol and Drug Treatment

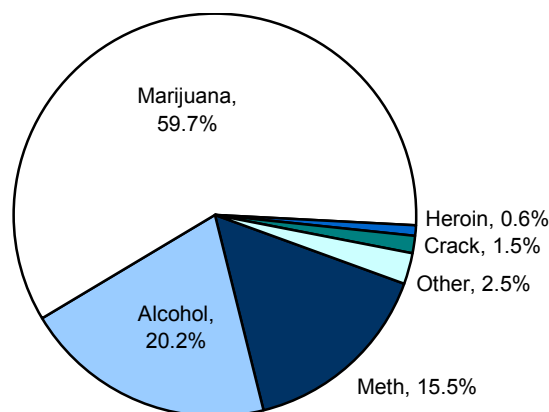
		2000		2001		2002		2003		2004	
TOTAL COUNTY ADMISSIONS		220,998	100.0%	245,823	100.0%	248,896	100.0%	240,793	100.0%	227,586	100.0%
Gender	Male	139,741	63.2%	157,787	64.2%	160,830	64.6%	155,443	64.6%	146,437	64.3%
	Female	81,257	36.8%	88,036	35.8%	88,066	35.4%	85,350	35.4%	81,149	35.7%
Age Initiated Substance Use	Under 10	6,235	2.8%	7,216	2.9%	7,302	2.9%	6,509	2.7%	5,934	2.6%
	11 to 12	17,696	8.0%	19,862	8.1%	20,208	8.1%	18,873	7.8%	18,542	8.1%
	13 to 14	33,687	15.2%	39,748	16.2%	39,617	15.9%	37,193	15.4%	36,814	16.2%
	15 to 17	53,217	24.1%	59,759	24.3%	61,517	24.7%	58,285	24.2%	55,999	24.6%
	18 to 20	38,092	17.2%	41,952	17.1%	41,616	16.7%	39,294	16.3%	38,616	17.0%
	21 and over	67,137	30.4%	72,542	29.5%	73,764	29.6%	68,636	28.5%	67,047	29.5%
IV Drug Users	Yes	79,296	35.9%	75,549	30.7%	69,349	27.9%	61,628	25.6%	54,644	24.0%
	No	141,702	64.1%	170,274	69.3%	179,547	72.1%	179,165	74.4%	172,942	76.0%
Pregnant	Yes	4,149	5.1%	4,731	5.4%	4,836	5.5%	4,473	5.2%	4,700	5.8%

Indicator 3: Admissions to Alcohol and Drug Treatment (Continued)

Table 3.6
AOD Treatment Admissions by Primary Drug Type, Percent of Total Admissions, and Rate per 100,000 Population 10-17 Years

		2000	2001	2002	2003	2004
TOTAL ADMISSIONS		17,420	20,900	21,233	21,821	20,615
Methamphetamines	Number	1,573	2,292	2,522	3,046	3,198
	Population 10-17	4,075,192	4,195,254	4,301,243	4,389,096	4,449,006
	Percent of Total	9.0%	11.0%	11.9%	14.0%	15.5%
	Rate per 100,000	38.6	54.6	58.6	69.4	71.9
Alcohol	Number	3,891	4,541	4,475	4,724	4,165
	Population 10-17	4,075,192	4,195,254	4,301,243	4,389,096	4,449,006
	Percent of Total	22.3%	21.7%	21.1%	21.6%	20.2%
	Rate per 100,000	95.5	108.2	104.0	107.6	93.6
Marijuana	Number	10,937	12,941	13,246	12,858	12,303
	Population 10-17	4,075,192	4,195,254	4,301,243	4,389,096	4,449,006
	Percent of Total	62.8%	61.9%	62.4%	58.9%	59.7%
	Rate per 100,000	268.4	308.5	308.0	293.0	276.5
Heroin	Number	185	147	102	106	124
	Population 10-17	4,075,192	4,195,254	4,301,243	4,389,096	4,449,006
	Percent of Total	1.1%	0.7%	0.5%	0.5%	0.6%
	Rate per 100,000	4.5	3.5	2.4	2.4	2.8
Crack/Cocaine	Number	407	377	401	396	319
	Population 10-17	4,075,192	4,195,254	4,301,243	4,389,096	4,449,006
	Percent of Total	2.3%	1.8%	1.9%	1.8%	1.5%
	Rate per 100,000	10.0	9.0	9.3	9.0	7.2
Other Drugs	Number	427	602	487	691	506
	Population 10-17	4,075,192	4,195,254	4,301,243	4,389,096	4,449,006
	Percent of Total	2.5%	2.9%	2.3%	3.2%	2.5%
	Rate per 100,000	10.5	14.3	11.3	15.7	11.4

Figure 3.7
2004 Admissions by Primary Drug Type
Among Youth Under 18 Years



Indicator 3: Admissions to Alcohol and Drug Treatment (Continued)

Table 3.7
AOD Treatment Admissions among Youth Under Age 18 by Client Race/Ethnicity, Rate per 100,000
Population 10 to 17, and Percent of Total Admissions

		2000	2001	2002	2003	2004
TOTAL ADMISSIONS UNDER 18 YEARS		17,420	20,900	21,233	21,821	20,615
Male	Number	12,248	14,496	14,653	14,878	13,837
	Population 10-17	2,093,619	2,152,000	2,204,826	2,249,454	2,279,227
	Rate per 100,000	585.0	673.6	664.6	661.4	607.1
	Percent of Total	70.3%	69.4%	69.0%	68.2%	67.1%
Female	Number	5,172	6,404	6,580	6,943	6,778
	Population 10-17	1,981,573	2,043,254	2,096,417	2,139,642	2,169,779
	Rate per 100,000	261.0	313.4	313.9	324.5	312.4
	Percent of Total	29.7%	30.6%	31.0%	31.8%	32.9%
American Indian	Number	243	213	237	278	254
	Population 10-17	24,287	25,593	26,925	28,218	29,281
	Rate per 100,000	1000.5	832.3	880.2	985.2	867.5
	Percent of Total	1.4%	1.0%	1.1%	1.3%	1.2%
Asian/Pacific Islander	Number	699	777	817	689	604
	Population 10-17	431,778	439,348	449,260	457,063	464,323
	Rate per 100,000	161.9	176.9	181.9	150.7	130.1
	Percent of Total	4.0%	3.7%	3.8%	3.2%	2.9%
Black	Number	1,827	2,254	2,364	2,554	2,527
	Population 10-17	306,157	312,175	315,140	315,011	311,739
	Rate per 100,000	596.8	722.0	750.1	810.8	810.6
	Percent of Total	10.5%	10.8%	11.1%	11.7%	12.3%
Hispanic	Number	7,371	9,916	10,536	11,336	11,292
	Population 10-17	1,648,035	1,723,674	1,808,609	1,894,789	1,968,814
	Rate per 100,000	447.3	575.3	582.5	598.3	573.5
	Percent of Total	42.3%	47.4%	49.6%	51.9%	54.8%
White	Number	6,509	6,978	6,544	6,040	5,358
	Population 10-17	1,552,147	1,578,889	1,583,319	1,574,247	1,555,175
	Rate per 100,000	419.4	442.0	413.3	383.7	344.5
	Percent of Total	37.4%	33.4%	30.8%	27.7%	26.0%
Other	Number	771	762	735	924	580
	Percent of Total	4.4%	3.6%	3.5%	4.2%	2.8%

Alcohol and Drug-Related Crime

Key Findings

- Drug-related crime rates for felony and misdemeanor drug offenses, including dangerous drugs, narcotics, marijuana, and other drug violations, rose from 962 per 100,000 in 2001 to 1,023 per 100,000 in 2004. The rate of arrest for dangerous drugs rose from 221 per 100,000 in 2000 to 29 percent in 2004 while the rates for narcotics and marijuana decreased slightly.
- Whites and Hispanics accounted for 40 percent and 36 percent of drug-related arrests respectively in 2004, and Blacks accounted for another 20 percent. In 2004, the rate of arrest was significantly higher for the Black population with an arrest rate of 3262 per 100,000. The rate of arrest for Hispanics was 1074 per 100,000, and the rate of arrest for Whites was 915 per 100,000. Asian/Pacific Islanders had the lowest rate of arrest at 168 per 100,000.
- The highest rate of drug-related arrests by age group was for 18-24 year olds with an arrest rate of 2337 per 100,000 in 2004. The next highest rate was for 25-34 year olds with an arrest rate of 1457 per 100,000. Arrest rates steadily declined with age. Adolescents under 18 accounted for 7.4 percent of all drug-related arrests.
- Drug crime rates among Black teens ages 10 to 17 have steadily dropped from 2000 to 2004 (1,043 to 871), and although crime rates are higher among Black teens compared to other race/ethnicity categories, they are not as high as the overall rates among the Black community ages 10 to 69.
- Alcohol-related crime rates for public drunkenness, liquor law violations, and driving-under-the-influence dropped 12% from 1,238 per 100,000 in 2000 to 1,087 per 100,000 in 2004.
- Arrests for DUI's accounted for almost 60 percent of all arrests for alcohol-related crimes in 2004. Roughly one-third were for drunkenness, and 8.5 percent were due to liquor law violations. Whites accounted for 46 percent of arrests for alcohol-related arrests and Hispanics accounted for roughly 41 percent.
- The highest rate of arrests for alcohol-related crime was for 18-24 year olds with a rate of 2400 per 100,000 in 2004. The next highest rate was for 35-34 year olds with a rate of 1547 arrests per 100,000 in 2004. Rates steadily declined with age.
- For adolescents under 18 males accounted for three quarters of all alcohol-related arrests in 2004. Whites accounted for over half of alcohol-related arrests and also had a significantly higher rate of arrest compared to other race/ethnic groups.



Indicator 4: Arrests for Drug-Related Crime

The number of felony and misdemeanor arrests for drug crimes, including dangerous drugs, narcotics, marijuana, and other drug violations and rate per 100,000 population 10 to 69 years.

Table/Figure 4.1
Number of Felony and Misdemeanor Arrests for Drug Offenses and Rate per 100,000 Population 10 to 69 Years

	2000	2001	2002	2003	2004
Number of Drug Arrests	252,353	249,791	257,458	275,299	290,503
Population 10-69	26,237,550	26,849,142	27,398,530	27,929,698	28,387,096
Rate per 100,000	961.8	930.4	939.7	985.7	1023.4

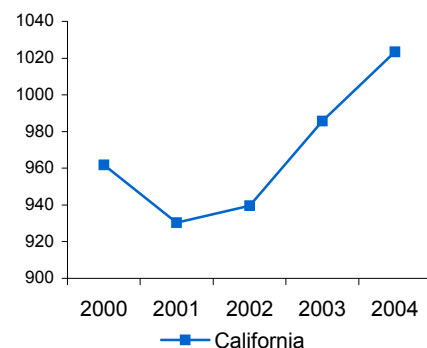


Table 4.2
Number of Felony and Misdemeanor Arrests for Drug Offenses by Specific Offense and Rate per 100,000 Population 10-69 Years

		2000	2001	2002	2003	2004
ALL DRUG ARRESTS		252,353	249,791	257,458	275,299	290,503
Dangerous Drugs	Number	57,866	61,308	66,522	74,775	82,418
	Population 10-69	26,237,550	26,849,142	27,398,530	27,929,698	28,387,096
	Rate per 100,000	220.5	228.3	242.8	267.7	290.3
	Percent of Total	22.9%	24.5%	25.8%	27.2%	28.4%
Narcotics	Number	53,014	47,569	48,881	50,440	52,474
	Population 10-69	26,237,550	26,849,142	27,398,530	27,929,698	28,387,096
	Rate per 100,000	202.1	177.2	178.4	180.6	184.9
	Percent of Total	21.0%	19.0%	19.0%	18.3%	18.1%
Marijuana	Number	62,418	60,481	59,933	61,203	60,037
	Population 10-69	26,237,550	26,849,142	27,398,530	27,929,698	28,387,096
	Rate per 100,000	237.9	225.3	218.7	219.1	211.5
	Percent of Total	24.7%	24.2%	23.3%	22.2%	20.7%
Other Drug Violations	Number	79,055	80,433	82,122	88,881	95,574
	Population 10-69	26,237,550	26,849,142	27,398,530	27,929,698	28,387,096
	Rate per 100,000	301.3	299.6	299.7	318.2	336.7
	Percent of Total	31.3%	32.2%	31.9%	32.3%	32.9%

Indicator 4: Arrests for Drug-Related Crime (Continued)

Table 4.3
 Number of Arrests for Felony and Misdemeanor Drug Offenses
 by Race/Ethnicity of Offender and Rate per 100,000 Population 10-69 Years

		2000	2001	2002	2003	2004
ALL DRUG ARRESTS		252,353	249,791	257,458	275,299	290,503
American Indian	Number	967	876	1,036	1,042	1,044
	Population	150,264	157,905	165,656	173,338	181,019
	Rate per 100,000	643.5	554.8	625.4	601.1	576.7
	Percent of Total	0.4%	0.4%	0.4%	0.4%	0.4%
Asian/Pacific Islander	Number	5,025	5,715	5,841	6,368	5,938
	Population	3,137,325	3,231,504	3,341,016	3,444,198	3,539,798
	Rate per 100,000	160.2	176.9	174.8	184.9	167.7
	Percent of Total	2.0%	2.3%	2.3%	2.3%	2.0%
Black	Number	51,926	50,066	51,043	53,468	57,547
	Population	1,737,458	1,754,279	1,763,065	1,766,870	1,764,424
	Rate per 100,000	2988.6	2853.9	2895.1	3026.1	3261.5
	Percent of Total	20.6%	20.0%	19.8%	19.4%	19.8%
Hispanic	Number	84,683	86,059	89,219	97,519	104,813
	Population	8,333,039	8,677,217	9,051,335	9,421,918	9,762,633
	Rate per 100,000	1016.2	991.8	985.7	1035.0	1073.6
	Percent of Total	33.6%	34.5%	34.7%	35.4%	36.1%
White	Number	105,785	103,159	106,078	112,048	115,942
	Population	12,439,889	12,579,997	12,619,536	12,656,957	12,669,652
	Rate per 100,000	850.4	820.0	840.6	885.3	915.1
	Percent of Total	41.9%	41.3%	41.2%	40.7%	39.9%
Other	Number	3,967	3,916	4,241	4,854	5,219
	Percent of Total	1.6%	1.6%	1.6%	1.8%	1.8%

Indicator 4: Arrests for Drug-Related Crime (Continued)

Table 4.4
Number of Arrests for Felony and Misdemeanor Drug Offenses
by Age of Offender and Age-Specific Rate per 100,000 Population

		2000	2001	2002	2003	2004
ALL DRUG ARRESTS		252,353	249,791	257,458	275,299	290,503
10-17 Years	Number	23,509	23,970	23,167	22,216	21,459
	Population	4,075,191	4,195,254	4,301,243	4,389,095	4,449,006
	Rate per 100,000	576.9	571.4	538.6	506.2	482.3
	Percent of Total	9.3%	9.6%	9.0%	8.1%	7.4%
18-24 Years	Number	69,318	71,538	74,689	80,797	84,179
	Population	3,386,962	3,452,012	3,528,042	3,562,712	3,601,325
	Rate per 100,000	2046.6	2072.4	2117.0	2267.9	2337.4
	Percent of Total	27.5%	28.6%	29.0%	29.4%	29.0%
25-34 Years	Number	70,019	66,617	68,555	72,587	77,015
	Population	5,247,447	5,265,975	5,291,088	5,300,067	5,285,997
	Rate per 100,000	1334.3	1265.0	1295.7	1369.5	1457.0
	Percent of Total	27.7%	26.7%	26.6%	26.4%	26.5%
35-44 Years	Number	64,441	61,544	62,234	66,389	69,637
	Population	5,511,998	5,577,123	5,600,481	5,647,294	5,686,698
	Rate per 100,000	1169.1	1103.5	1111.2	1175.6	1224.6
	Percent of Total	25.5%	24.6%	24.2%	24.1%	24.0%
45-54 Years	Number	21,511	22,289	24,481	28,343	32,341
	Population	4,385,820	4,569,996	4,690,274	4,824,610	4,948,970
	Rate per 100,000	490.5	487.7	522.0	587.5	653.5
	Percent of Total	8.5%	8.9%	9.5%	10.3%	11.1%
55-64 Years	Number	3,017	3,283	3,801	4,324	5,212
	Population	2,643,259	2,781,932	2,959,008	3,141,430	3,312,749
	Rate per 100,000	114.1	118.0	128.5	137.6	157.3
	Percent of Total	1.2%	1.3%	1.5%	1.6%	1.8%
65+ Years	Number	524	532	511	626	642
	Population	3,616,009	3,715,729	3,801,509	3,903,957	3,998,057
	Rate per 100,000	14.5	14.3	13.4	16.0	16.1
	Percent of Total	0.2%	0.2%	0.2%	0.2%	0.2%

Indicator 4: Arrests for Drug-Related Crime (Continued)

Figure 4.2
State of California
Drug Arrest Rate
per 100,000
Population 10-69
for Drug Offenses

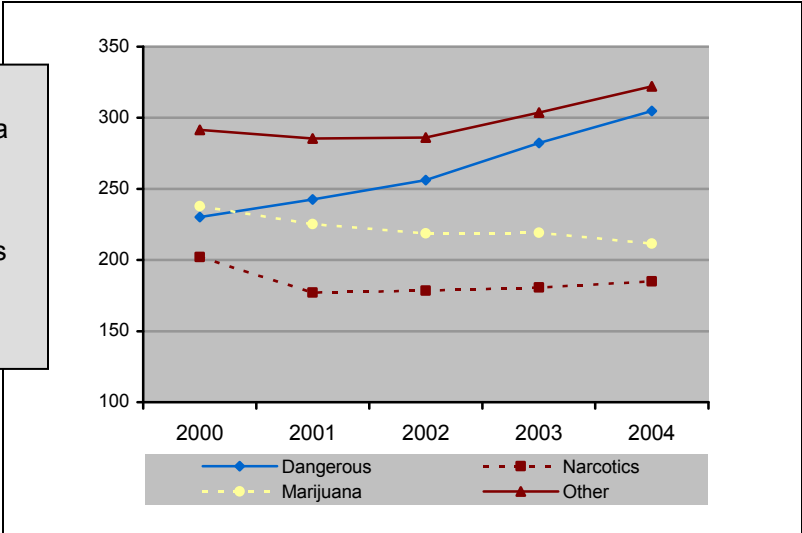


Figure 4.3
State of California
Drug Arrest Rate
per 100,000
Population 10-69
by Client Age
Group

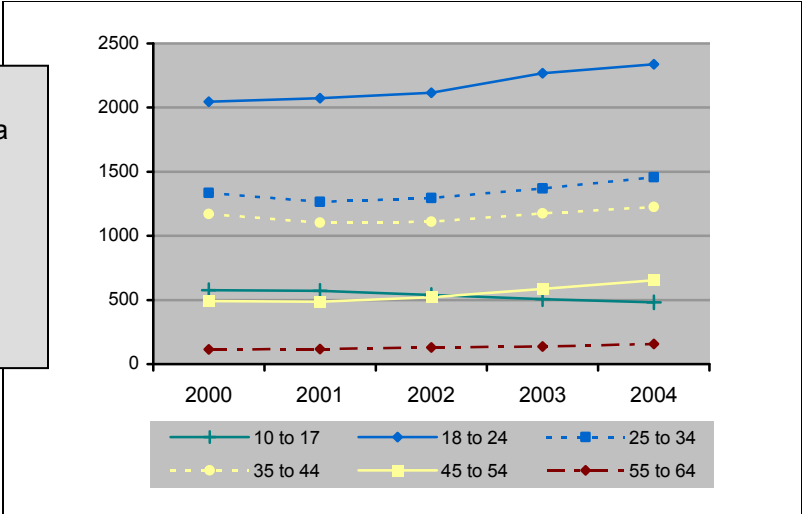
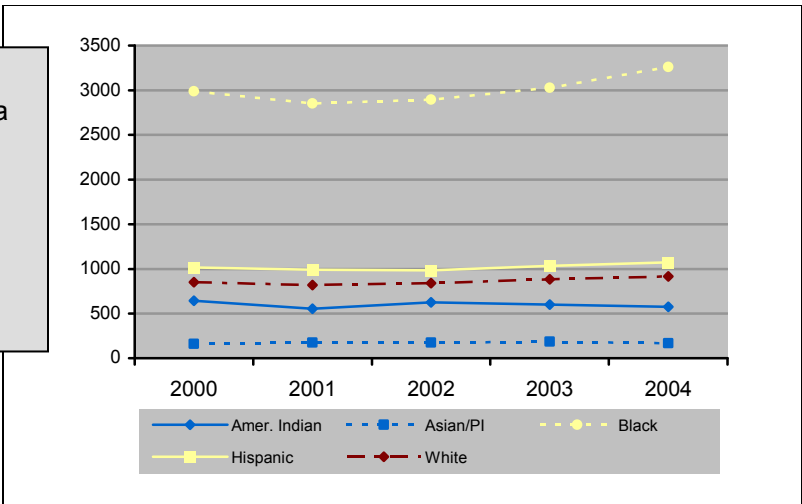


Figure 4.4
State of California
Drug Arrest Rate
per 100,000
Population 10-69
by Client Race/
Ethnicity



Indicator 4: Arrests for Drug-Related Crime (Continued)

Table 4.5
Number of Arrests for Felony and Misdemeanor Drug Offenses by Gender and Race among Underage Offenders and Rate per 100,000 Population 10-17 Years

		2000	2001	2002	2003	2004
ALL DRUG ARRESTS UNDER 18 YEARS		23,523	23,988	23,187	22,233	21,477
Male	Number	19,622	19,738	19,004	17,953	17,245
	Population 10-17	2,093,619	2,152,000	2,204,826	2,249,454	2,279,227
	Rate per 100,000	937.2	917.2	861.9	798.1	756.6
	Percent of Total	83.4%	82.3%	82.0%	80.7%	80.3%
Female	Number	3,901	4,250	4,183	4,280	4,232
	Population 10-17	1,981,573	2,043,254	2,096,417	2,139,642	2,169,779
	Rate per 100,000	196.9	208.0	199.5	200.0	195.0
	Percent of Total	16.6%	17.7%	18.0%	19.3%	19.7%
American Indian	Number	81	91	82	80	85
	Population 10-17	24,287	25,593	26,925	28,218	29,281
	Rate per 100,000	333.5	355.6	304.5	283.5	290.3
	Percent of Total	0.3%	0.4%	0.4%	0.4%	0.4%
Asian/Pacific Islander	Number	725	792	705	715	545
	Population 10-17	431,778	439,348	449,260	457,063	464,323
	Rate per 100,000	167.9	180.3	156.9	156.4	117.4
	Percent of Total	3.1%	3.3%	3.0%	3.2%	2.5%
Black	Number	3,192	2,932	2,850	2,718	2,716
	Population 10-17	306,157	312,175	315,140	315,011	311,739
	Rate per 100,000	1042.6	939.2	904.4	862.8	871.2
	Percent of Total	13.6%	12.2%	12.3%	12.2%	12.6%
Hispanic	Number	10,361	10,642	10,235	10,095	10,005
	Population 10-17	1,648,035	1,723,674	1,808,609	1,894,789	1,968,814
	Rate per 100,000	628.7	617.4	565.9	532.8	508.2
	Percent of Total	44.0%	44.4%	44.1%	45.4%	46.6%
White	Number	8,724	9,083	8,776	8,217	7,728
	Population 10-17	1,552,147	1,578,889	1,583,319	1,574,247	1,555,175
	Rate per 100,000	562.1	575.3	554.3	522.0	496.9
	Percent of Total	37.1%	37.9%	37.8%	37.0%	36.0%
Other	Number	440	448	539	408	398
	Percent of Total	1.9%	1.9%	2.3%	1.8%	1.9%

Indicator 5: Arrests for Alcohol-Related Crime

The number of felony and misdemeanor arrests for alcohol-related crimes, including felony and misdemeanor driving under-the-influence, public drunkenness, and liquor law violations and rate per 100,000 population 10 to 69 years.

Table/Figure 5.1

Number of Felony and Misdemeanor Arrests for Alcohol Offenses and Rate per 100,000 Population 10 to 69 Years

	2000	2001	2002	2003	2004
Number of Alcohol Arrests	324,876	313,209	308,160	314,982	308,682
Population 10-69	26,237,550	26,849,142	27,398,530	27,929,698	28,387,096
Rate per 100,000	1238.2	1166.6	1124.7	1127.8	1087.4

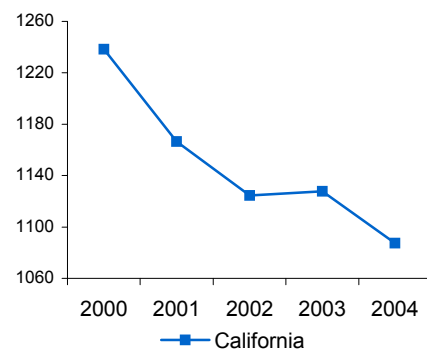


Table 5.2

Number of Felony and Misdemeanor Arrests for Alcohol Offenses by Specific Offense and Rate per 100,000 Population 10-69 Years

		2000	2001	2002	2003	2004
ALL ALCOHOL ARRESTS		324,876	313,209	308,160	314,982	308,682
Driving-Under-the-Influence	Number	183,955	178,950	179,663	185,973	182,771
	Population 10-69	26,237,550	26,849,142	27,398,530	27,929,698	28,387,096
	Rate per 100,000	701.1	666.5	655.7	665.9	643.9
	Percent of Total	56.6%	57.1%	58.3%	59.0%	59.2%
Drunk	Number	114,023	106,443	100,095	98,613	99,795
	Population 10-69	26,237,550	26,849,142	27,398,530	27,929,698	28,387,096
	Rate per 100,000	434.6	396.4	365.3	353.1	351.6
	Percent of Total	35.1%	34.0%	32.5%	31.3%	32.3%
Liquor Law Violations	Number	26,898	27,816	28,402	30,396	26,116
	Population 10-69	26,237,550	26,849,142	27,398,530	27,929,698	28,387,096
	Rate per 100,000	102.5	103.6	103.7	108.8	92.0
	Percent of Total	8.3%	8.9%	9.2%	9.7%	8.5%

Indicator 5: Arrests for Alcohol-Related Crime (Continued)

Table 5.3
Number of Arrests for Felony and Misdemeanor Alcohol Offenses
by Race/Ethnicity of Offender and Rate per 100,000 Population 10-69 Years

		2000	2001	2002	2003	2004
ALL ALCOHOL ARRESTS		324,876	313,209	308,160	314,982	308,682
American Indian	Number	2,546	2,308	2,081	2,068	2,027
	Population	150,264	157,905	165,656	173,338	181,019
	Rate per 100,000	1694.4	1461.6	1256.2	1193.0	1119.8
	Percent of Total	0.8%	0.7%	0.7%	0.7%	0.7%
Asian/Pacific Islander	Number	7,418	7,628	8,135	8,569	8,359
	Population	3,137,325	3,231,504	3,341,016	3,444,198	3,539,798
	Rate per 100,000	236.4	236.1	243.5	248.8	236.1
	Percent of Total	2.3%	2.4%	2.6%	2.7%	2.7%
Black	Number	25,365	24,275	24,032	24,787	24,041
	Population	1,737,458	1,754,279	1,763,065	1,766,870	1,764,424
	Rate per 100,000	1459.9	1383.8	1363.1	1402.9	1362.5
	Percent of Total	7.8%	7.8%	7.8%	7.9%	7.8%
Hispanic	Number	132,888	126,654	125,058	127,580	125,661
	Population	8,333,039	8,677,217	9,051,335	9,421,918	9,762,633
	Rate per 100,000	1594.7	1459.6	1381.7	1354.1	1287.2
	Percent of Total	40.9%	40.4%	40.6%	40.5%	40.7%
White	Number	147,259	144,616	141,523	143,818	140,515
	Population	12,439,889	12,579,997	12,619,536	12,656,957	12,669,652
	Rate per 100,000	1183.8	1149.6	1121.5	1136.3	1109.1
	Percent of Total	45.3%	46.2%	45.9%	45.7%	45.5%
Other	Number	9,400	7,728	7,331	8,160	8,079
	Percent of Total	2.9%	2.5%	2.4%	2.6%	2.6%

Indicator 5: Arrests for Alcohol-Related Crime (Continued)

Table 5.4
Number of Arrests for Felony and Misdemeanor Alcohol Offenses
by Age of Offender and Age-Specific Rate per 100,000 Population

		2000	2001	2002	2003	2004
ALL ALCOHOL ARRESTS		324,876	313,209	308,160	314,982	308,682
10-17 Years	Number	12,290	11,377	10,709	10,382	9,782
	Population	4,075,181	4,195,254	4,301,243	4,389,095	4,449,006
	Rate per 100,000	301.6	271.2	249.0	236.5	219.9
	Percent of Total	3.8%	3.6%	3.5%	3.3%	3.2%
18-24 Years	Number	81,349	81,758	82,763	86,900	86,418
	Population	3,386,962	3,452,012	3,528,042	3,562,712	3,601,325
	Rate per 100,000	2401.8	2368.4	2345.9	2439.2	2399.6
	Percent of Total	25.0%	26.1%	26.9%	27.6%	28.0%
25-34 Years	Number	90,348	84,063	81,580	83,246	81,752
	Population	5,247,447	5,265,975	5,291,088	5,300,067	5,285,997
	Rate per 100,000	1721.8	1596.3	1541.8	1570.7	1546.6
	Percent of Total	27.8%	26.8%	26.5%	26.4%	26.5%
35-44 Years	Number	80,966	76,176	72,266	71,294	67,984
	Population	5,511,998	5,577,123	5,600,481	5,647,294	5,686,698
	Rate per 100,000	1468.9	1365.9	1290.4	1262.4	1195.5
	Percent of Total	24.9%	24.3%	23.5%	22.6%	22.0%
45-54 Years	Number	43,255	43,351	43,990	45,225	45,228
	Population	4,385,820	4,569,996	4,690,274	4,824,610	4,948,970
	Rate per 100,000	986.2	948.6	937.9	937.4	913.9
	Percent of Total	13.3%	13.8%	14.3%	14.4%	14.7%
55-64 Years	Number	12,607	12,674	13,108	14,141	13,958
	Population	2,643,259	2,781,932	2,959,008	3,141,430	3,312,749
	Rate per 100,000	476.9	455.6	443.0	450.1	421.3
	Percent of Total	3.9%	4.0%	4.3%	4.5%	4.5%
65+ Years	Number	4,055	3,803	3,743	3,783	3,556
	Population	3,616,009	3,715,729	3,801,509	3,903,957	3,998,057
	Rate per 100,000	112.1	102.3	98.5	96.9	88.9
	Percent of Total	1.2%	1.2%	1.2%	1.2%	1.2%

Indicator 5: Arrests for Alcohol-Related Crime (Continued)

Figure 5.2
State of California
Alcohol Arrest Rate
per 100,000
Population 10-69
for Alcohol
Offenses

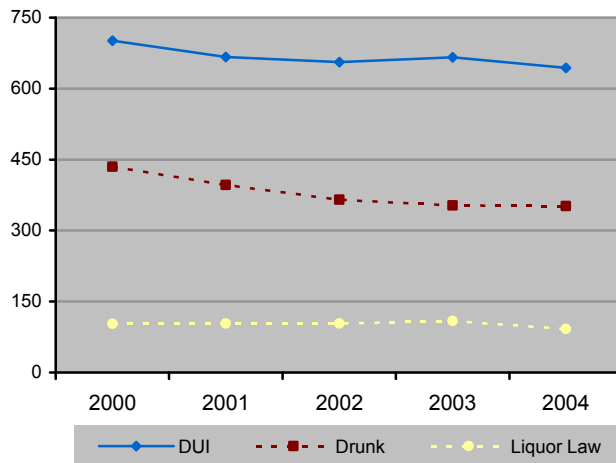


Figure 5.3
State of California
Alcohol Arrest Rate
per 100,000
Population 10-69
by Client Age
Group

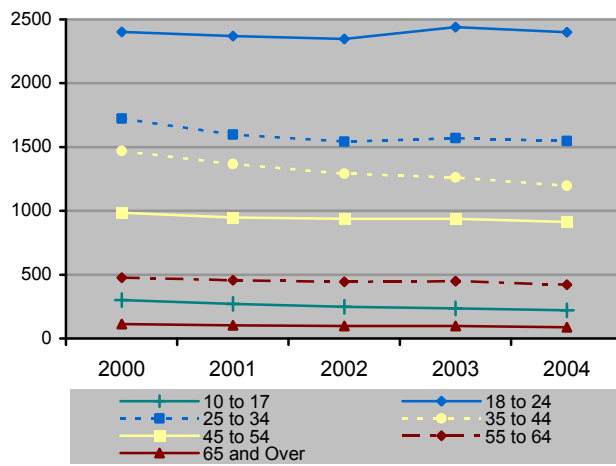
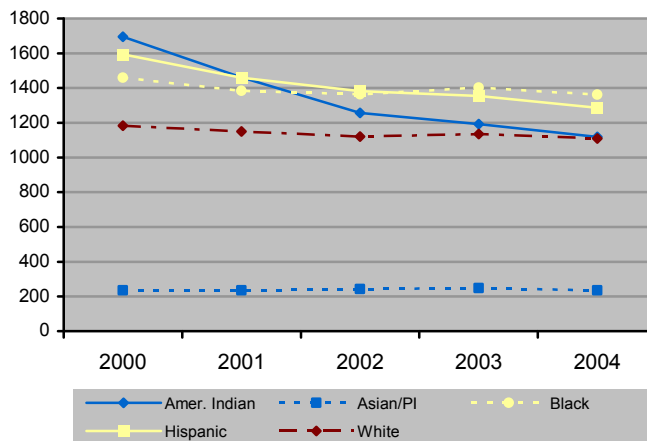


Figure 5.4
State of California
Alcohol Arrest Rate
per 100,000
Population 10-69
by Client Race/
Ethnicity



Indicator 5: Arrests for Alcohol-Related Crime (Continued)

Table 5.5
Number of Arrests for Felony and Misdemeanor Alcohol Offenses by Gender and Race among Underage Offenders and Rate per 100,000 Population 10-17 Years

		2000	2001	2002	2003	2004
ALL ALCOHOL ARRESTS UNDER 18 YEARS		12,296	11,384	10,710	10,393	9,786
Male	Number	9,479	8,725	8,070	7,650	7,287
	Population 10-17	2,093,619	2,152,000	2,204,826	2,249,454	2,279,227
	Rate per 100,000	452.8	405.4	366.0	340.1	319.7
	Percent of Total	77.1%	76.6%	75.4%	73.6%	74.5%
Female	Number	2,817	2,659	2,640	2,743	2,499
	Population 10-17	1,981,573	2,043,254	2,096,417	2,139,642	2,169,779
	Rate per 100,000	142.2	130.1	125.9	128.2	115.2
	Percent of Total	22.9%	23.4%	24.6%	26.4%	25.5%
American Indian	Number	83	89	73	65	99
	Population 10-17	24,287	25,593	26,925	28,218	29,281
	Rate per 100,000	341.7	347.8	271.1	230.3	338.1
	Percent of Total	0.7%	0.8%	0.7%	0.6%	1.0%
Asian/Pacific Islander	Number	320	292	307	274	254
	Population 10-17	431,778	439,348	449,260	457,063	464,323
	Rate per 100,000	74.1	66.5	68.3	59.9	54.7
	Percent of Total	2.6%	2.6%	2.9%	2.6%	2.6%
Black	Number	589	544	491	482	446
	Population 10-17	306,157	312,175	315,140	315,011	311,739
	Rate per 100,000	192.4	174.3	155.8	153.0	143.1
	Percent of Total	4.8%	4.8%	4.6%	4.6%	4.6%
Hispanic	Number	4,439	3,970	3,817	3,650	3,625
	Population 10-17	1,648,035	1,723,674	1,808,609	1,894,789	1,968,814
	Rate per 100,000	269.4	230.3	211.0	192.6	184.1
	Percent of Total	36.1%	34.9%	35.6%	35.1%	37.0%
White	Number	6,634	6,293	5,837	5,743	5,156
	Population 10-17	1,552,147	1,578,889	1,583,319	1,574,247	1,555,175
	Rate per 100,000	427.4	398.6	368.7	364.8	331.5
	Percent of Total	54.0%	55.3%	54.5%	55.3%	52.7%
Other	Number	231	196	185	179	206
	Percent of Total	1.9%	1.7%	1.7%	1.7%	2.1%

Drinking and Driving

Key Findings

- The rate of fatalities in alcohol-involved accidents was 4.0 per 100,000 in 2004, an increase from 3.6 per 100,000 in 2000. The Healthy People 2010 goal is 4.0 per 100,000. Alcohol-involved collisions accounted for 9.2 percent of total collisions in 2004.
- Males accounted for three-quarters of total parties who had been drinking in alcohol-involved accidents in 2003. During this year Hispanics had the highest rate at 224 per 100,000 compared to Blacks at 208 per 100,000 and Whites at 146 per 100,000.
- By far the highest rate of accidents for parties who had been drinking and involved in alcohol-related accidents was for 18-24 year olds with a rate of 359 per 100,000 in 2003. The next highest rate was for 25-34 year olds with a rate of 239 per 100,000. Rates decreased steadily with age.
- Underage parties less than 21 years in alcohol-involved accidents were primarily male, who accounted for 81 percent of the total in 2003. Whites accounted for 41 percent of the total and Hispanics accounted for 43 percent of the total in 2003. The number of youth who had ridden in a car with someone who had been drinking increased slightly between 2001 and 2003 from 18.7 percent to 20.0 percent. The rate for males remained steady at 19 percent whereas the rate for females increased from 18.5 percent in 2001 to 21 percent in 2003.



Indicator 6: Alcohol-Involved Motor Vehicle Accidents

The number of alcohol-involved motor vehicle accidents and number of persons injured or killed and rate of admission per 100,000 population

Table/Figure 6.1
State of California Fatalities in Alcohol-Involved Accidents and Rate per 100,000

	2000	2001	2002	2003
Number of Fatalities	1,233	1,308	1,411	1,445
Total Population	34,098,744	34,784,376	35,392,957	35,989,988
Rate per 100,000	3.6	3.8	4.0	4.0
Healthy People 2010	4.0	4.0	4.0	4.0

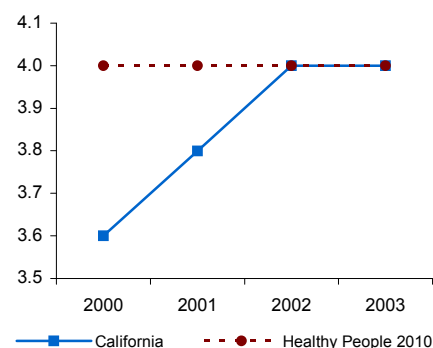


Table 6.2
State of California Fatalities in Alcohol-Involved Accidents
as a Percent of Total Collisions

	2000	2001	2002	2003
Total Collisions	511,248	522,562	544,742	538,955
Total Alcohol-Involved Collisions	45,515	47,618	49,311	49,431
Alcohol-Involved Collisions as a Percent of Total	8.9%	9.1%	9.1%	9.2%
Number of Persons Killed	1,233	1,308	1,411	1,445
Number of Persons Injured	30,971	31,806	32,073	31,340

Healthy People 2010
U.S. Department of Health and
Human Services

*Reduce the number of
traffic fatalities involving
alcohol to 4.0 per 100,000
by the year 2010*

Indicator 6: Alcohol-Involved Motor Vehicle Accidents (Continued)

Table 6.3
Parties in Alcohol-Involved Accidents Who Had Been Drinking by Party Gender and Race and Rate per 100,000 Population Ages 16 and Over

		2000	2001	2002	2003
TOTAL PARTIES WHO HAD BEEN DRINKING IN ALCOHOL-INVOLVED ACCIDENTS		46,591	48,752	50,600	50,782
Male	Number	36,254	37,349	38,432	38,036
	Population	12,723,607	13,029,593	13,314,494	13,579,496
	Rate per 100,000	284.9	286.6	288.6	280.1
	Percent of Total	77.8%	76.6%	76.0%	74.9%
Female	Number	8,145	8,630	8,850	9,293
	Population	13,048,126	13,325,080	13,570,266	13,833,743
	Rate per 100,000	62.4	64.8	65.2	67.2
	Percent of Total	17.5%	17.7%	17.5%	18.3%
Other/Unknown	Number	2,192	2,773	3,318	3,453
	Percent of Total	4.7%	5.7%	6.6%	6.8%
Black	Number	**	**	3,738	3,447
	Population	1,624,616	1,638,223	1,647,033	1,653,901
	Rate per 100,000			227.0	208.4
	Percent of Total			7.4%	6.8%
Hispanic	Number	**	**	18,303	18,678
	Population	7,391,159	7,687,184	8,017,534	8,340,747
	Rate per 100,000			228.3	223.9
	Percent of Total			36.2%	36.8%
White	Number	**	**	19,566	19,557
	Population	13,175,194	13,326,183	13,378,746	13,442,006
	Rate per 100,000			146.2	145.5
	Percent of Total			38.7%	38.5%
Other/Unknown	Number	**	**	8,993	9,100
	Percent of Total			17.8%	17.9%

Indicator 6: Alcohol-Involved Motor Vehicle Accidents (Continued)

Table 6.4
Parties in Alcohol-Involved Accidents Who Had Been Drinking by Age and Rate per 100,000 Population

		2000	2001	2002	2003
TOTAL PARTIES WHO HAD BEEN DRINKING		46,591	48,752	50,600	50,782
10-17 Years	Number	867	895	943	932
	Population	4,075,181	4,195,254	4,301,243	4,389,095
	Rate per 100,000	21.3	21.3	21.9	21.2
	Percent of Total	1.9%	1.8%	1.9%	1.8%
18-24 Years	Number	11,136	11,943	12,439	12,800
	Population	3,386,962	3,452,012	3,528,042	3,562,712
	Rate per 100,000	328.8	346.0	352.6	359.3
	Percent of Total	23.9%	24.5%	24.6%	25.2%
25-34 Years	Number	12,211	12,545	12,530	12,649
	Population	5,247,447	5,265,975	5,291,088	5,300,067
	Rate per 100,000	232.7	238.2	236.8	238.7
	Percent of Total	26.2%	25.7%	24.8%	24.9%
35-44 Years	Number	9,963	10,013	9,839	9,415
	Population	5,511,998	5,577,123	5,600,481	5,647,294
	Rate per 100,000	180.8	179.5	175.7	166.7
	Percent of Total	21.4%	20.5%	19.4%	18.5%
45-54 Years	Number	5,568	5,765	6,107	6,092
	Population	4,385,820	4,569,996	4,690,274	4,824,610
	Rate per 100,000	127.0	126.1	130.2	126.3
	Percent of Total	12.0%	11.8%	12.1%	12.0%
55-64 Years	Number	2,062	2,121	2,319	2,382
	Population	2,643,259	2,781,932	2,959,008	3,141,430
	Rate per 100,000	78.0	76.2	78.4	75.8
	Percent of Total	4.4%	4.4%	4.6%	4.7%
65+ Years	Number	1,164	1,179	1,301	1,244
	Population	3,616,009	3,715,729	3,801,509	3,903,957
	Rate per 100,000	32.2	31.7	34.2	31.9
	Percent of Total	2.5%	2.4%	2.6%	2.4%
Other/Unknown	Number	3,620	4,291	5,122	5,268
	Percent of Total	7.8%	8.8%	10.1%	10.4%

Indicator 6: Alcohol-Involved Motor Vehicle Accidents (Continued)

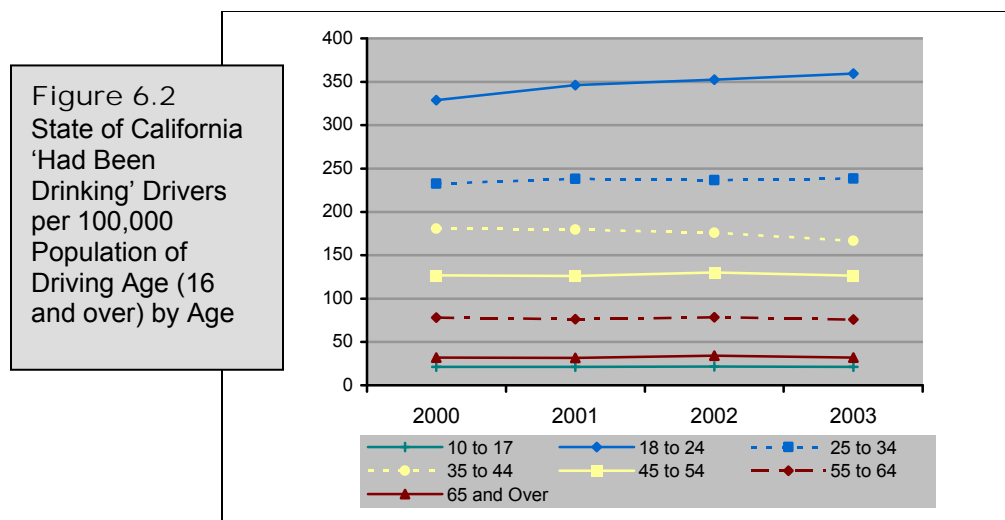


Table 6.5
Underage Parties (<21 Years) in Alcohol-Involved Accidents Who Had been Drinking by Party Gender and Race and Rate per 100,000 Population Ages 16 – 20

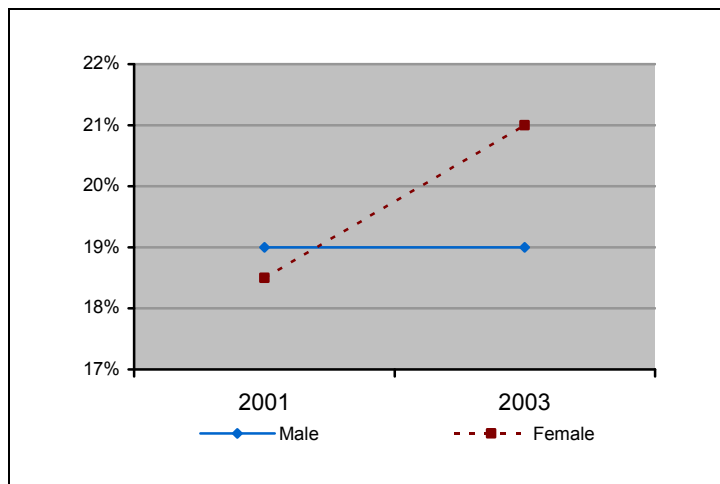
		2000	2001	2002	2003
TOTAL PARTIES WHO HAD BEEN DRINKING IN ALCOHOL-INVOLVED ACCIDENTS		4,902	5,215	5,396	5,314
Male	Number	4,105	4,317	4,428	4,322
	Population	1,284,313	1,295,318	1,310,454	1,318,046
	Rate per 100,000	319.6	333.3	337.9	327.9
	Percent of Total	83.7%	82.8%	82.1%	81.3%
Female	Number	794	897	957	984
	Population	1,179,400	1,202,832	1,226,017	1,239,064
	Rate per 100,000	67.3	74.6	78.1	79.4
	Percent of Total	16.2%	17.2%	17.7%	18.5%
Other/Unknown	Number	3	1	11	8
	Percent of Total	0.1%	0.0%	0.2%	0.2%
Black	Number	**	**	210	238
	Population	168,805	171,638	175,089	178,005
	Rate per 100,000			119.9	133.7
	Percent of Total			3.9%	4.5%
Hispanic	Number	**	**	2,321	2,307
	Population	1,006,151	1,019,076	1,044,631	1,051,801
	Rate per 100,000			222.2	219.3
	Percent of Total			43.0%	43.4%
White	Number	**	**	2,228	2,174
	Population	924,051	937,344	941,992	948,859
	Rate per 100,000			236.5	229.1
	Percent of Total			41.3%	40.9%
Other/Unknown	Number	**	**	637	595
	Percent of Total			11.8%	11.2%

Indicator 6: Alcohol-Involved Motor Vehicle Accidents (Continued)

Table 6.6
Youth Who Have Ridden in a Car with Someone Who Had Been Drinking
Percent of Youth Population by Gender with Comparison to State Rates

	2001			2003		
	Total	Male	Female	Total	Male	Female
Estimated Number	569,000	295,000	274,000	651,000	317,000	334,000
Estimated Population	3,036,000	1,556,000	1,480,000	3,260,000	1,669,000	1,590,000
Percent of Total	18.7%	19.0%	18.5%	20.0%	19.0%	21.0%

Figure 6.3
Percent of Youth Who Have Ridden in a Car
with Someone Who Had Been Drinking



Healthy People 2010
U.S. Department of Health and
Human Services

*Reduce the number of high
school students who have
ridden in a car with someone
who had been drinking to
30% by the year 2010*

Alcohol and Drug-Related Morbidity

Key Findings

- The rate of hospitalizations due to alcohol and drug use declined from 95 per 100,000 in 2000 to 90 per 100,000 in 2003. The rate of hospitalizations due to alcohol-related causes declined only a fraction from 45.9 per 100,000 in 2000 to 45.1 per 100,000 in 2003, whereas the rate of admissions due to drug-related causes decreased more substantially from 48.9 per 100,000 to 44.6 per 100,000.
- Alcohol psychosis accounted for 48 percent and alcohol dependence syndrome accounted for 45 percent of alcohol-related hospitalizations in 2003. Over two-thirds of drug-related hospitalizations were for drug poisoning in 2003.

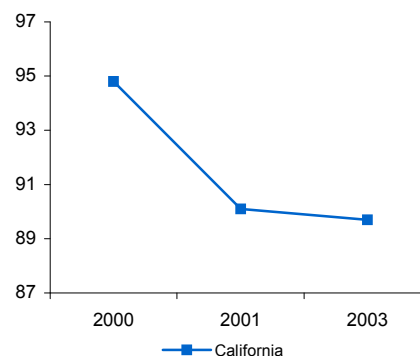


Indicator 7: Hospitalizations Due to Alcohol and Drug Use

The number of hospital admissions due to alcohol and drug-related causes and rate per 100,000 population.

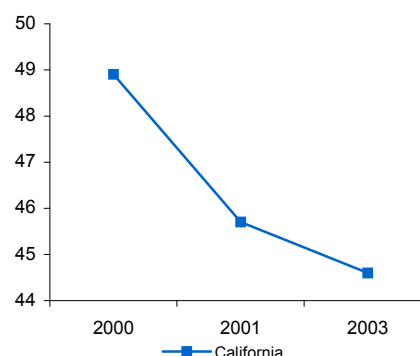
Table/Figure 7.1
Number of Hospital Admissions Due to Alcohol *and* Drug-Related Causes (Combined) and Rate per 100,000

	2000	2001	2002	2003
Number of Admissions	32,316	31,338	**	32,282
Total Population	34,098,744	34,784,376	35,392,957	35,989,988
Hospitalization Rate per 100,000	94.8	90.1	**	89.7



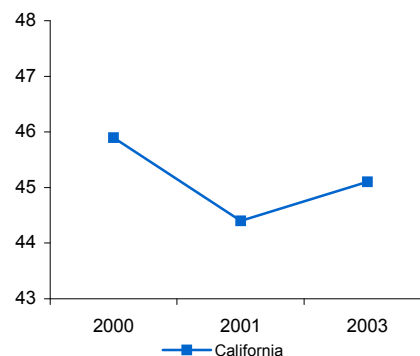
Table/Figure 7.2
Number of Hospital Admissions Due to *Alcohol*-Related Causes and Rate per 100,000 with Comparison to Statewide Rates

	2000	2001	2002	2003
Number of Admissions	16,661	15,888	**	16,055
Total Population	34,098,744	34,784,376	35,392,957	35,989,988
Hospitalization Rate per 100,000	48.9	45.7	**	44.6



Table/Figure 7.3
Number of Hospital Admissions Due to *Drug*-Related Causes and Rate per 100,000

	2000	2001	2002	2003
Number of Admissions	15,655	15,450	**	16,227
Total Population	34,098,744	34,784,376	35,392,957	35,989,988
Hospitalization Rate per 100,000	45.9	44.4	**	45.1



Indicator 7: Hospitalizations Due to Alcohol and Drug Use (Continued)

Table 7.4
Number of Hospital Admissions Due to Alcohol and Drug-Related Causes by Specific Cause

	2000		2001		2002		2003	
	N	%	N	%	N	%	N	%
TOTAL ALCOHOL-RELATED HOSPITALIZATIONS	16,661	100	15,888	100	**	**	16,055	100
Alcohol Psychosis	6,874	41.26	7,445	46.86	**	**	7,777	48.44
Alcohol Abuse	0	0.00	0	0.00	**	**	0	0.00
Alcohol Dependence Syndrome	8,715	52.31	7,512	47.28	**	**	7,308	45.52
Alcohol Gastritis	1,068	6.41	926	5.83	**	**	966	6.02
Alcoholic Liver Disease	0	0.00	0	0.00	**	**	0	0.00
Fetal Alcohol Syndrome	4	0.02	5	0.03	**	**	4	0.02
Alcohol Poisoning	0	0.00	0	0.00	**	**	0	0.00
Excessive Blood Level of Alcohol	0	0.00	0	0.00	**	**	0	0.00
TOTAL DRUG-RELATED HOSPITALIZATIONS	15,655	100	15,450	100	**	**	16,227	100
Drug Psychosis	0	0.00	0	0.00	**	**	0	0.00
Dependence								
Barbituates	427	2.73	354	2.29	**	**	343	2.11%
Cannabis	416	2.66	262	1.70	**	**	293	1.81%
Cocaine	899	5.74	703	4.55	**	**	673	4.15%
Hallucinogen	4	0.03	2	0.01	**	**	6	0.04%
Inhalant	73	0.47	59	0.38	**	**	27	0.17%
Morphine	0	0.00	0	0.00	**	**	0	0.00%
Stimulant	796	5.08	842	5.45	**	**	1,021	6.29%
Combination	1,170	7.47	1,003	6.49	**	**	855	5.27%
Unspecified	319	2.04	196	1.27	**	**	103	0.63%
Maternal Drug Dependence	355	2.27	325	2.10	**	**	265	1.63
Abuse								
Amphetamine	259	1.65	363	2.35	**	**	441	2.72%
Antidepressant	2	0.01	3	0.02	**	**	4	0.02%
Cannabis	57	0.36	134	0.87	**	**	65	0.40%
Cocaine	322	2.06	346	2.24	**	**	324	2.00%
Hallucinogen	17	0.11	14	0.09	**	**	18	0.11%
Morphine	181	1.16	255	1.65	**	**	150	0.92%
Sedative	41	0.26	42	0.27	**	**	24	0.15%
Other, Mixed or Unspecified	448	2.86	402	2.60	**	**	338	2.08%
Drug Poisonings	9,737	62.20	10,048	65.04	**	**	11,148	68.70
Drug Exposure in Newborns	42	0.27	37	0.24	**	**	46	0.28
Fetal Damage due to Maternal Drug Use	61	0.39	37	0.24	**	**	54	0.33
Drug Polyneuropathy	29	0.19	23	0.15	**	**	29	0.18

** OSHPD admissions data not available for 2002.

Alcohol and Drug-Related Mortality

Key Findings

- The fatality rate for deaths due to alcohol and drug use increased between 2000 and 2003 from 19.0 deaths per 100,000 to 20.9 deaths per 100,000.
- The rate of deaths due to cirrhosis of the liver decreased slightly between 2000 and 2003 from 7.9 per 100,000 to 7.6 per 100,000. This rate is substantially above the Healthy People 2010 goal of 3.2 deaths per 100,000.
- The rate of drug-induced deaths per 100,000 increased between 2000 and 2003 from 8.0 per 100,000 to 10.0 per 100,000. This rate is substantially above the Health People 2010 goal of 1.2 deaths per 100,000.
- Over one third of deaths due to alcohol and drug use in 2003 were due to alcoholic liver disease, and almost a third of deaths were due to accidental drug poisoning. Alcohol dependence syndrome accounted for roughly eight percent of deaths and intentional self-poisoning of drugs accounted for roughly seven percent.
- Males accounted for over two-thirds of deaths due to alcohol and drug use in 2003. About 57 percent of deaths were for individuals between 35 and 54 years of age.
- Whites accounted for almost two-thirds of deaths due to alcohol and drug use in 2003. Hispanics comprised almost one fourth of the total during this year, and Blacks accounted for another eight percent.



Indicator 8: Deaths Due to Alcohol and Drug Use

The number of deaths due to alcohol and drug-related causes and age adjusted death rate per 100,000 population.

Table/Figure 8.1
Number of Deaths Due to Alcohol and Drug-Related Causes and Age-Adjusted Rate per 100,000

	2000	2001	2002	2003
Number of Deaths	6,146	6,388	6,857	7,318
Total Population	34,098,744	34,784,376	35,392,957	35,989,988
Age Adjusted Death Rate per 100,000	19.0	19.2	20.1	20.9

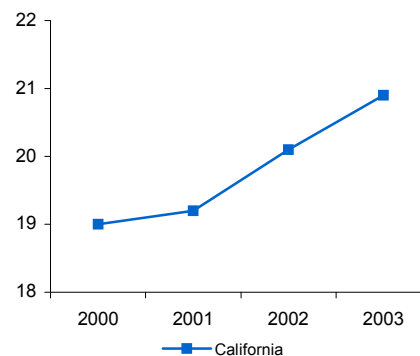


Table 8.2
Number of Deaths Due to Cirrhosis of the Liver and Rate per 100,000 with Comparison to Healthy People 2010 Objective

	2000	2001	2002	2003
Number of Deaths	2,480	2,744	2,495	2,610
Total Population	34,098,744	34,784,376	35,392,957	35,989,988
Age Adjusted Death Rate per 100,000	7.9	8.0	7.5	7.6
Healthy People 2010	3.2	3.2	3.2	3.2

Healthy People 2010
U.S. Department of Health and
Human Services

Objectives 26-2
*Reduce the rate of
cirrhosis deaths
to 3.2 per 100,000
by the year 2010.*

•••

Objectives 26-3
*Reduce the rate of
drug-induced deaths
to 1.2 per 100,000
population
by the year 2010*

Table 8.3
Number of Drug-Induced Deaths and Rate per 100,000
with Comparison to Healthy People 2010 Objective

	2000	2001	2002	2003
Number of Deaths	2,674	2,574	3,323	3,558
Total Population	34,098,744	34,784,376	35,392,957	35,989,988
Age Adjusted Death Rate per 100,000	8.0	8.0	9.5	10.0
Healthy People 2010	1.2	1.2	1.2	1.2

Indicator 8: Deaths Due to Alcohol and Drug Use (Continued)

Table 8.4
Number of Deaths Due to Alcohol and Drug-Related Causes by Specific Cause

		2000		2001		2002		2003	
		N	%	N	%	N	%	N	%
TOTAL ALCOHOL AND DRUG-RELATED DEATHS		6,146	100.00	6,388	100.00	6,857	100.00	7,318	100.00
Deaths Due to Alcohol Use	Alcohol Psychosis	66	1.07	77	1.21	65	0.95	76	1.04
	Alcohol Abuse	237	3.86	261	4.09	255	3.72	262	3.58
	Alcohol Dependence Syndrome	465	7.57	515	8.06	524	7.64	582	7.95
	Alcoholic Polyneuropathy	0	0.00	0	0.00	1	0.01	1	0.01
	Degeneration of the Nervous System	25	0.41	20	0.31	7	0.10	10	0.14
	Alcoholic Myopathy	1	0.02	0	0.00	0	0.00	0	0.00
	Alcoholic Cardiomyopathy	109	1.77	83	1.30	90	1.31	99	1.35
	Alcoholic Gastritis	1	0.02	1	0.02	4	0.06	1	0.01
	Alcoholic Liver Disease	2,480	40.35	2,574	40.29	2,495	36.39	2,610	35.67
	Fetal Alcohol Syndrome	0	0.00	0	0.00	0	0.00	1	0.01
	Fetus and Newborn Affect by Maternal Use of Alcohol	0	0.00	0	0.00	0	0.00	0	0.00
	Alcohol Poisoning	37	0.60	64	1.00	49	0.71	55	0.75
	Intentional Self-Poisoning (Alcohol)	2	0.03	1	0.02	7	0.10	6	0.08
	Excessive Blood Level of Alcohol	0	0.00	0	0.00	0	0.00	0	0.00
	Alcohol-Induced Pancreatitis	44	0.72	41	0.64	29	0.42	48	0.66
Deaths Due to Drug Use	Accidental Drug Poisoning	1,793	29.17	1,871	29.29	2,289	33.38	2,398	32.77
	Intentional Self-Poisoning (Drug)	423	6.88	449	7.03	481	7.01	520	7.11
	Intentional Poisoning (Assault)	7	0.11	7	0.11	8	0.12	11	0.15
	Other Drug Poisonings	89	1.45	92	1.44	134	1.95	155	2.12
	Fetus and Newborn Affect by Maternal Use of Drugs	5	0.08	7	0.11	8	0.12	9	0.12
	Mental and Behavioral Disorders due to Use of...								
	... Opioids	35	0.57	39	0.61	43	0.63	48	0.66
	... Cannabinoids	0	0.00	0	0.00	0	0.00	0	0.00
	... Sedatives or Hypnotics	0	0.00	3	0.05	0	0.00	1	0.01
	... Cocaine	32	0.52	37	0.58	56	0.82	53	0.72
	... Stimulants	24	0.39	21	0.33	24	0.35	31	0.42
	... Hallucinogens	0	0.00	0	0.00	1	0.01	0	0.00
	... Solvents	0	0.00	0	0.00	1	0.01	1	0.01
	... Psychoactive Substances	271	4.41	225	3.52	286	4.17	340	4.65

Indicator 8: Deaths Due to Alcohol and Drug Use (Continued)

Table 8.5
Number of Deaths Due to Alcohol and Drug-Related Causes by Population Demographics of Decedents with Percent of Total Deaths

			2000	2001	2002	2003
TOTAL ALCOHOL AND DRUG DEATHS			6,146	6,388	6,857	7,318
Gender	Male	Number	4,465	4,452	4,747	5,061
		Percent of Total	72.6%	69.7%	69.2%	69.2%
	Female	Number	1,681	1,936	2,110	2,257
		Percent of Total	27.4%	30.3%	30.8%	30.8%
Age at Time of Death	10-17 Years	Number	20	16	17	28
		Percent of Total	0.3%	0.3%	0.2%	0.4%
	18-24 Years	Number	98	133	160	174
		Percent of Total	1.6%	2.1%	2.3%	2.4%
	25-34 Years	Number	546	474	562	567
		Percent of Total	8.9%	7.4%	8.2%	7.7%
	35-44 Years	Number	1,563	1,542	1,645	1,706
		Percent of Total	25.4%	24.1%	24.0%	23.3%
	45-54 Years	Number	1,877	2,122	2,242	2,497
		Percent of Total	30.5%	33.2%	32.7%	34.1%
	55-64 Years	Number	1,004	1,096	1,232	1,280
		Percent of Total	16.3%	17.2%	18.0%	17.5%
	65+ Years	Number	1,015	986	982	1,049
		Percent of Total	16.5%	15.4%	14.3%	14.3%
Race	American Indian/ Alaskan Native	Number	54	78	81	87
		Percent of Total	0.9%	1.2%	1.2%	1.2%
	Asian/ Pacific Islander	Number	121	139	164	156
		Percent of Total	2.0%	2.2%	2.4%	2.1%
	Black	Number	516	529	629	594
		Percent of Total	8.4%	8.3%	9.2%	8.1%
	Hispanic	Number	1,550	1,508	1,619	1,790
		Percent of Total	25.2%	23.6%	23.6%	24.5%
	White	Number	3,893	4,123	4,353	4,676
		Percent of Total	63.3%	64.5%	63.5%	63.9%
	Other/ Unknown	Number	12	11	11	15
		Percent of Total	0.2%	0.2%	0.2%	0.2%

Sources

Indicator	Agency	Print and Electronic Data Sources
Prevalence of Alcohol Use	UCLA Center for Health Policy Research, California Department of Health Services, Public Health Institute	California Health Interview Survey (CHIS)
Admissions to Alcohol and Other Drug Treatment	California Department of Alcohol and Drug Programs	California Alcohol and Drug Data System (CADDSS) Admissions Data
Alcohol and Drug-Related Crime	California Department of Justice, Office of the Attorney General, Criminal Justice Statistics Center	California Arrest Data 2000-2004
Drinking and Driving	California Highway Patrol (CHP)	Statewide Integrated Traffic Records System (SWITRS) 2000-2004
Alcohol and Drug-Related Hospitalizations	Office of Statewide Health Planning and Development (OSHPD)	California Hospital Discharge Data Set, 2000, 2001, 2003
Alcohol and Drug-Related Mortality	California Department of Health Services, Vital Statistics Section	Death Statistical Masterfile 2000-2003 California Health Status Profiles 2006



This publication was prepared by the Center for Applied Research Solutions (CARS), Inc.'s Community Prevention Initiative (CPI) Technical Assistance and Training contract funded by the California Department of Alcohol and Drug Programs (ADP).

The data system and analysis was developed by EMT Associates, Inc. and Premiere Data Services under a separate Small Business and Innovation Research (SBIR) contract funded by the National Institute on Drug Abuse (NIDA)